

Edwards® B-KM-8140 & B-8141 Series Hazardous Location AC & DC AdaptaBuzzer™

Features

- Cast aluminum housing and cover
- Corrosion resistant heat flowed powder epoxy finish

Description

The Edwards B-KM-8140 & B-8141 series AdaptaBuzzers are quality, heavy duty AC & DC buzzers designed for use in hazardous locations. The sound is produced by the hammer action of a vibrating armature against the cover.

Agency Approvals

- B-KM-8140 series is UL Listed for Class I, Division 1 and 2, Groups C and D; Class II, Division 1 and 2, Groups E, F, and G locations

Specifications

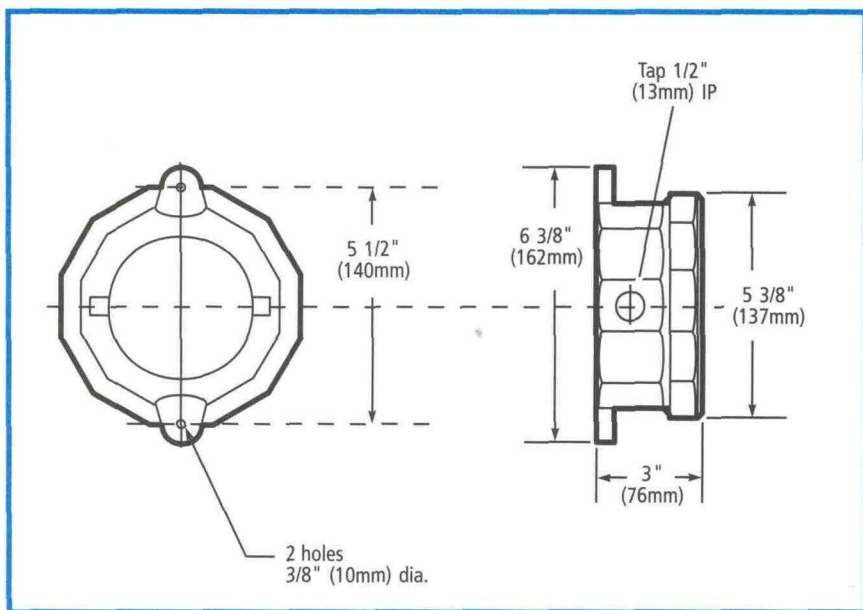
- 89 dBA at 10 feet (3.05m)

Installation

The buzzer is provided with two mounting lugs for wall mounting. A 1/2" (13mm) tapped conduit entrance is provided on one side for field wiring. Wiring connections are made in the base of the unit and the cover assembly plugs into a receptacle in the base.

Applications

For use in hazardous location areas where a distinctive, lower dB buzzer signal is required for timing, scheduling, paging, and general alarm applications. Typical installations include petroleum plants, gas plants, grain elevators, flour and paper mills, textile plants, and tankers.



Cat No.	Volts	Amps	VA	Coil Res (Ohms)
B-KM-8140-G5	24V AC 60 Hz	1.1	19.2	5.0
B-KM-8140-N5	120V AC 60 Hz	0.2	24	146
B-KM-8140-R5	240V AC 60 Hz	0.1	24	750
B-8141-G1	24V DC	0.8	19.2	21.5
B-8141-S1	250V DC	0.1	25	600

ADAPTABUZZER is a trademark of Edwards.